

DULWICH INTERNATIONAL | SUZHOU | HIGH SCHOOL

SUZHOU HIGH SCHOOL

德威国际高中, 江苏省苏州中学



The following pages contain practice exams for the subjects covered in the Dulwich International High School Suzhou Entrance Examination. Studying this study guide will greatly assist you in preparing for the entrance examination.

2019 IGCSE Entrance Test Sample

English – Speaking

10 minutes

Sample Topics

Team Sports



Think about the following questions. You will be asked other questions in addition to the ones below.

1. Do you like playing team sports?
2. What team sports have you played before?
3. What skills are developed by playing team sports?
4. Is it better to play team sports or individual sports?
5. Do you think too much competition in sports is bad?
6. Do team sports encourage competition or team-work?

Fast Food



Think about the following questions. You will be asked other questions in addition to the ones below.

1. Do you like fast food?
2. What is your favourite fast food?
3. Why do you think fast food is popular?
4. Do you prefer American fast food or traditional Chinese food?
5. What are the dangers of having so much fast food?
6. Should we stop all TV adverts for fast food?

Single-Gender Schools

In some countries, there are schools only for boys and schools only for girls.



Think about the following questions. You will be asked other questions in addition to the ones below.

1. Are there boys and girls in your school?
2. Would you like to go to a single-gender school?
3. Why do some parents want their child to go to a single-gender school?
4. Why might it be a bad idea to go to a single-gender school?
5. Are single-gender schools a good idea for high school but not primary school?
6. Should the Chinese government encourage more schools to become single-sex schools?

Reading Books



Think about the following questions. You will be asked other questions in addition to the ones below.

1. Do you read books?
2. Do you enjoy reading?
3. What kind of books are most popular amongst young people?
4. Is it better to watch movies or read books?
5. Do you think young people read more books now than in the past?
6. Will young people still be reading books in the future?

Travelling to Other Countries



Think about the following questions. You will be asked other questions in addition to the ones below.

1. Have you travelled to other countries before?
2. Which countries are you most interested in visiting?
3. Do you enjoy travelling?
4. Would it be better to travel inside China rather than to other countries?
5. What problems are caused by travelling overseas?
6. What can we learn from travelling?

Home



Think about the following questions. You will be asked other questions in addition to the ones below.

1. Where is your home?
2. What is your home like?
3. What would your ideal home be like?
4. Where is your favourite place at home?
5. Would you prefer a modern or traditional home?
6. Why do some people say that their home brings them happiness?



2019 IGCSE Entrance Test

Sample English – Writing

30 minutes

10 marks

Instructions:

- You will be asked to write an essay based on one of three topics, and you will need to state and explain any relevant causes/effects, reasons, or opinions to support your idea. If your response is copied or memorized, you will be awarded 0 for this section of the test.
请从三个话题中选择一个写一篇作文。作文中需陈述并解释相关因果，理由及观点。一旦发现作文内容是抄袭或提前背诵的，该部分将做零分处理。
- You should only answer ONE of the questions.
仅需选择一个话题进行作答。

Do not turn over until instructed to do so.

没有监考老师的示意，请勿提前翻开试卷。

Writing

You will be asked to write 150 - 200 words to explain opinions, reasons / causes, or effects. You will have a choice of three writing prompts.

1. Many young people feel unhappy about their lives. Write 150-200 words to explain why you think this might be the case. [EXPLAINING REASONS/CAUSES]
2. Some people feel that modern technology has damaged family life. Write 150-200 words to explain what problems you think technology causes for family life. [EXPLAINING EFFECTS]
3. People disagree about whether going on holidays overseas is a good idea. Write 150-200 words to explain the different opinions you think people might hold about this topic. [EXPLAINING OPINIONS]

The following factors will be considered when your writing is marked:

- the variety and complexity of sentence structures
- the accuracy of your grammar
- the precision and appropriateness of your vocabulary
- the originality of your ideas
- the development of your ideas
- the organisation and structure of your writing.



2019 IGCSE Entrance Test Sample

Mathematics – Section A

10 minutes

10 marks

Pinyin Name: _____

Instructions 说明：

Section A is a vocabulary test A 部分是词汇测试

- No glossary is to be used 不可使用词汇表
- No Calculator is to be used 不可使用计算器
- Please answer the questions on the separate answer sheet. 请将答案填在答题卡上
- Please put your name clearly on each answer sheet used. 请将你的姓名清楚地写在答题卡上
- Each question is worth 1 mark. 每空一分
- This section will be collected in after 10 minutes. 10 分钟后此部分卷子将被收回。

Do not turn over until instructed to do so.

请等监考官说开始，方可翻阅试卷。

NAME: _____

1. Two opposite sides in a rectangle are _____.
2. The sum of the square root of 36 and the cube of 3 is _____.
3. A number which has only two factors is called a _____.
4. A square has a perimeter of 28cm, the area is _____.
5. Find the mean of 4,7,8,9,10,12,13.
6. There are 24 boys and 40 girls in a class. Write this as a ratio in its simplest form.
7. The obtuse angle in an isosceles triangle is 130° . What is the size of the acute angle?
8. Write down four factors of 60
9. In a bag there are 4 red balls and 8 green balls. I choose a ball at random. What is the probability that the ball is green.
10. Lines which cross at 90° are _____.

No.	Answer	Marks
1		1
2		1
3		1
4		1
5		1

No.	Answer	Marks
6		1
7		1
8		1
9		1
10		1

**DULWICH INTERNATIONAL | SUZHOU |
HIGH SCHOOL**

SUZHOU HIGH SCHOOL

德威国际高中, 江苏省苏州中学



2019 IGCSE Entrance Test Sample

Mathematics – Sections B and C 数学 B、C 部分

50 minutes

36 marks

Instructions:

- A glossary may be used 可使用我校现场提供的双语词汇表
- A Calculator may be used 可使用计算器
- Please answer the questions on the separate answer booklet. 请将答案填在答题卡上
- Please put your name clearly on each booklet used. 请将你的姓名清楚地写在答题卡上
- For Section B, each correct answer is awarded 2 marks. B 部分每个正确的答案得 3 分
- No marks are taken away for incorrect answers. 答错不得分
- Section B is worth 30 marks B 部分总分为 30 分
- Section C is worth 6 marks. C 部分总分为 6 分
- You must show your process in Section C to gain marks C 部分必须显示计算解题步骤来得分

Do not turn over until instructed to do so.

请等监考老师说开始时，方可翻阅试卷。

Section B

1. The mean of 8 numbers is 4.3. Another 4 numbers are added and the mean decreases to 4.15. What is the mean of the 4 extra numbers?

2. Find the coordinates of the points of intersection of $y = (x + 3)^2$ and $3y + 7x + 1 = 0$

3. List all integer values which satisfy $7 < 5x - 6 < 43$ and $6 < 2 + 5x \leq 23$

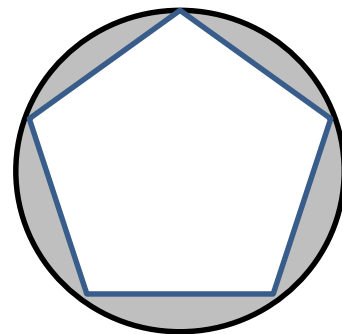
4. Find the equation of the line which is perpendicular to $y=3x+1$, and passes through the midpoint of $A(0,4)$ and $B(4,-2)$

5. There are 9 counters in a box; 4 of the counters are red, 2 of the counters are blue and 3 of the counters are yellow. Jane takes two counters at random out of the box. Find the probability that at least one of the counters is yellow.

6. Two mathematically similar solids, A and B have volumes 20m^3 and 67.5m^3 . The Surface Area of A is 20m^2 . What is the Surface Area of B?

7. A circle has radius 1.5. Point O is at the centre of the circle; points A, B, C & D are on the circumference such that AD is a diameter. Given that $AC=2$, find $\cos(\angle ABC)$.

8. A circle of radius 2 has a pentagon inscribed inside it., find the area of the shaded region



9. A chord of length 6cm is drawn in a circle with centre O. The chord is 4cm away from O. What is the length of another chord which is 2cm away from O.

10. The positive integers x, y and z satisfy $xy = 14$, $yz = 10$ and $xz = 35$. What is the value of $x + y + z$?

11.

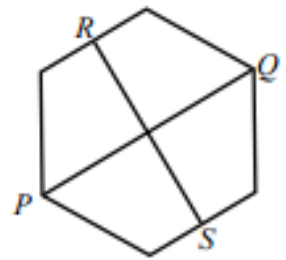
The two roots of the quadratic equation $x^2 - 85x + c = 0$ are both prime numbers. What is the sum of the digits of c ?

12.

The length of a rectangle is three times its width. If the length is decreased by 5 and the width increased by 5, the rectangle becomes a square. Find the length of the original rectangle.

13.

The points P and Q are opposite corners of a regular hexagon and the points R and S are midpoints of opposite sides, as shown. The area of the hexagon is 60cm^2 . What is the product of the lengths, in cms, of PQ and RS?



14.

Let p, q, r be positive integers such that

$$p + \frac{1}{q + \frac{1}{r}} = \frac{25}{19}$$

Find the value of pqr .

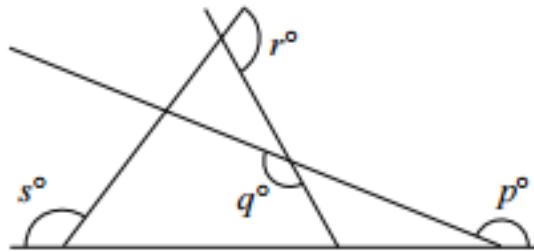
15.

For how many three-digit positive integers does the product of the digits equal 20?

Section C

You must show the process for your answer to score marks

What is the value of $p + q + r$?.





2019 IGCSE Entrance Test Sample

Mathematics

Pinyin Name:

Answer Sheet

SECTION B

No.	Answer	Marks
1		2
2		2
3		2
4		2
5		2
6		2
7		2
8		2

No.	Answer	Marks
9		2
10		2
11		2
12		2
13		2
14		2
15		2

**DULWICH INTERNATIONAL | SUZHOU |
HIGH SCHOOL**

SUZHOU HIGH SCHOOL

德威国际高中, 江苏省苏州中学



2019 IGCSE Entrance Test Sample

Mathematics

Pinyin Name:

Answer Sheet

SECTION C

--	--

--	--



Science

45 minutes

30 marks

Pinyin Name: _____

Instructions 说明 :

Section A is a vocabulary test A 部分是词汇测试

Section B is a Physics knowledge and understanding test B 部分是考察物理知识和理解的测试

Section C is a test of your understanding of the reading material you were given in the study guide

C 部分是基于提供给你的额外阅读材料所考察的阅读理解

Instructions:

- No glossary is to be used. 不可使用词汇表
- A calculator may be used. 可使用计算器
- Please answer the questions on the separate answer sheet. 请将答案填在答题卡上
- Please put your name clearly on each answer sheet used. 请将你的姓名清楚地写在答题卡上
- Each question is worth 1 mark. 每空一分
- There are 30 marks in total.

Do not turn over until instructed to do so.

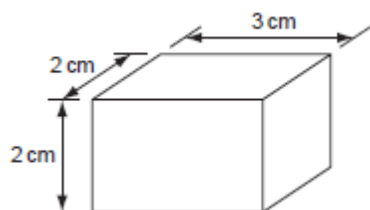
请等监考老师说开始时，方可翻阅试卷。

Section A – Please write your answers on a separate sheet

1. The negatively charged particles of an atom are known as _____.
2. An image on a mirror can be seen because light is _____ off its surface.
3. Quantities which only have magnitude are called _____ quantities.
4. The opposite poles of _____ materials attract each other.
5. A _____ is used to measure the EMF of a battery.
6. The units of force are _____.
7. When light passes from one medium to another it is _____.
8. The current in a circuit can be measured using an _____.
9. The centre of an atom is known as the _____.
10. _____ has a value of 9.81 N/kg.

Section B – Please write your answers on a separate sheet

11. The diagram shows a rectangular block of density 2 g/cm^3 .



What is the mass of the block?

- A. 2 g
- B. 6 g
- C. 14 g
- D. 24 g

12. A student runs around a sport track. After twenty minutes, the student has traveled 4.5 km. She then stops and rests for ten minutes. She takes another half hour to travel a further 7.5 km to finish her race. What is the average speed of the student for the whole journey?

- A. 10 km/h
- B. 11 km/h
- C. 12 km/h
- D. 13 km/h

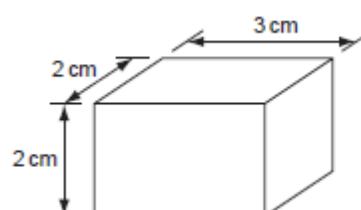
13. A block of wood floats when its Weight equals its Buoyancy Force. What is the Buoyancy Force for a floating block with mass of 18kg?

- A. 18 kg
- B. 18 N
- C. 180 kg
- D. 180 N

14. A child pulls a toy sled a force of 12 N, it slides on the ground while he pulls it and comes to a rest when he stops. What is the work done to move the sled 20m?

- A. 120 J
- B. 240 J
- C. 360 J
- D. 1200 J

11. 如图所示一个矩形砖，密度为 2 g/cm^3 。



请问该矩形砖的质量为多少？

- A. 2 g
- B. 6 g
- C. 14 g
- D. 24 g

12. 一个学生在跑道上奔跑。20 分钟后，该学生跑了 4.5km。她停下来休息了 10 分钟。然后她又用了半小时跑了 7.5km 完成了整场赛跑。请问全程该生的平均速度是多少？

- A. 10 km/h
- B. 11 km/h
- C. 12 km/h
- D. 13 km/h

13. 当一木块的重力等于其浮力时，木块会漂浮。请问一个质量为 18kg 的木块漂浮，其浮力为多少？

- A. 18 kg
- B. 18 N
- C. 180 kg
- D. 180 N

14. 一个孩子以 12N 的力拉一个玩具雪橇，当他拉时雪橇滑动，当他停时雪橇静止。请问将雪橇拉动 20m 所做的功是多少？

- A. 120 J
- B. 240 J
- C. 360 J
- D. 1200 J

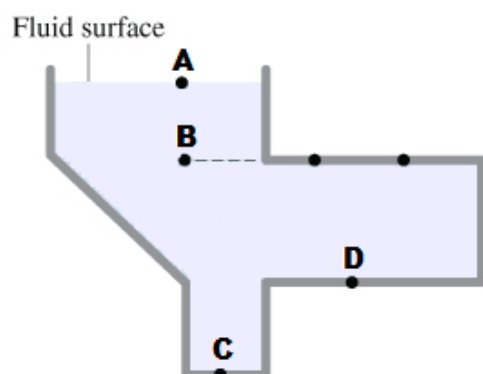
15. What is the energy conversion that happens when a water pump moves water from a lake to a tank?

- A. Electrical energy to gravitational potential energy
- B. Sound energy to Chemical energy
- C. Gravitational potential energy to wave energy
- D. Light energy to kinetic energy

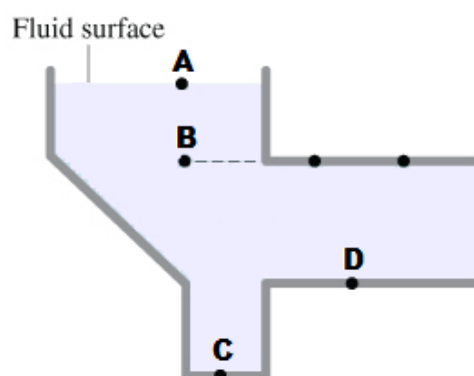
15. 水泵将水从湖里抽到水箱中，是什么能量的转化？

- A. 电能转化为重力势能
- B. 声能转化成化学能
- C. 重力势能转化成波能
- D. 光能转化为动能

16. A tank of water is shown in the diagram below. At which location is the pressure the least?



16. 一个水箱如图所示。其中哪一点所受到的压力最小？



17. Aluminium (Al) has a specific heat capacity of $896 \text{ J / kg } ^\circ\text{C}$. If 2240 J of heat is added to a 200 g block of Aluminium with an initial temperature of $22 \text{ }^\circ\text{C}$, what is the final temperature?

- A. $24.5 \text{ }^\circ\text{C}$
- B. $34.5 \text{ }^\circ\text{C}$
- C. $40.5 \text{ }^\circ\text{C}$
- D. $44.5 \text{ }^\circ\text{C}$

17. 铝(Al)的比热容为 $896 \text{ J / kg } ^\circ\text{C}$ 。如果将 2240J 的热量加入 200 g 初温为 $22 \text{ }^\circ\text{C}$ 的铝块中，请问铝块的最终温度为？

- A. $24.5 \text{ }^\circ\text{C}$
- B. $34.5 \text{ }^\circ\text{C}$
- C. $40.5 \text{ }^\circ\text{C}$
- D. $44.5 \text{ }^\circ\text{C}$

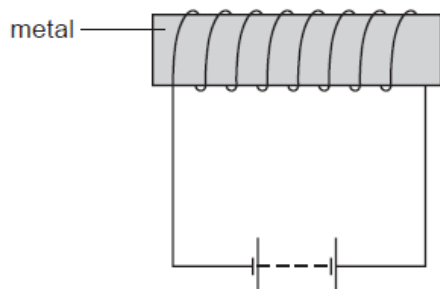
18. A student claps and measures 0.25 seconds before he hears an echo from a wall that is 40 m away. What is the speed of sound measured by the student?

- A. 160 m s^{-1}
- B. 320 m s^{-1}
- C. 330 m s^{-1}
- D. 340 m s^{-1}

18. 一个学生击掌， 0.25 秒后听到回声，该生距离墙 40m 远。请问该生测得的声速是多少？

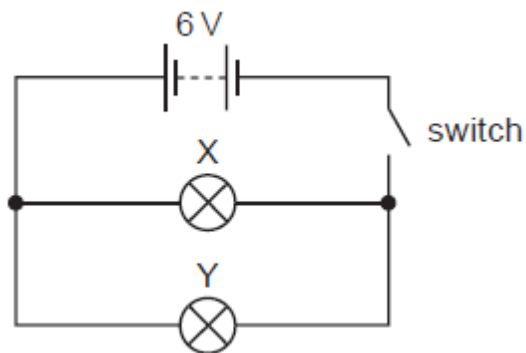
- A. 160 m s^{-1}
- B. 320 m s^{-1}
- C. 330 m s^{-1}
- D. 340 m s^{-1}

19. A student wishes to use a magnetizing coil to make a permanent magnet from a piece of metal.



Which metal should he use?

- A. Aluminum
 - B. Copper
 - C. Iron
 - D. Steel
20. In the circuit below, X and Y are identical 6V lamps.

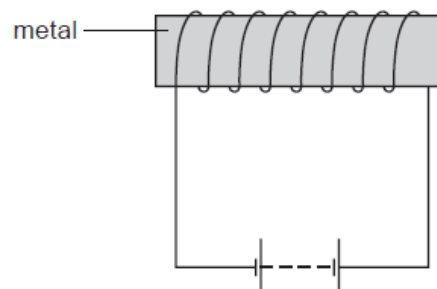


What happens when the switch is closed?

- A. X lights more brightly than Y
 - B. Y lights more brightly than X
 - C. X and Y light with equal brightness
 - D. Neither X nor Y light.
21. When an object is 4.0 cm in front of a converging lens, the inverted image is half the size of the object. What is the focal length of this lens?

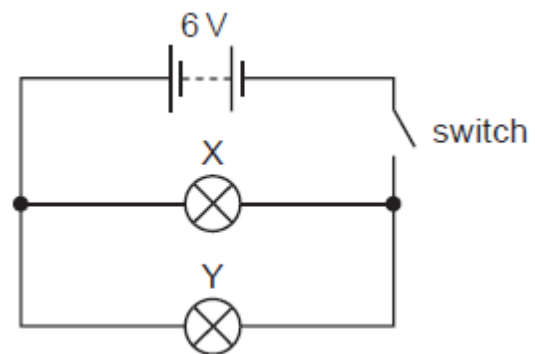
- A. 1.3 cm
- B. 2.0 cm
- C. 4.0 cm
- D. 5.3 cm

19. 一个学生想用通电螺线管做成电磁铁。



请问他应该使用哪种金属?

- A. 铝
 - B. 铜
 - C. 铁
 - D. 钢
20. 在电路图中, X 和 Y 是 6V 的小灯。



当开关闭合, 以下哪种情况是正确的。

- A. 小灯 X 比小灯 Y 亮
 - B. 小灯 y 比小灯 x 亮
 - C. 小灯 X 和小灯 y 一样亮
 - D. 两个灯都不亮.
21. 一个物体放在距离凸透镜 4.0cm 的位置, 所成的像为该物体一半的实像, 请问凸透镜的焦距是多少?

- A. 1.3 cm
- B. 2.0 cm
- C. 4.0 cm
- D. 5.3 cm

22. A glass rectangular prism has an index of refraction of 1.40. What is the critical angle of incidence for total internal reflection to occur between the glass and air?
- A. 45.6°
 - B. 47.2°
 - C. 48.9°
 - D. 52.8°

22. 一块矩形玻璃砖，其折射率为 1.40。入射角为多少时能发生全内反射？
- A. 45.6°
 - B. 47.2°
 - C. 48.9°
 - D. 52.8°

Section C – The questions in this section are based on the reading material that you were given in the Study Guide, on 'Light'. Please write your answers on a separate sheet.

- 23.** The law of reflection states that:
- A. angle of incidence = angle of reflection
 - B. angle of incidence = angle of refraction
 - C. angle of reflection = angle of refraction
 - D. angle of refraction = angle the critical angle
- 24.** When total internal reflection occurs:
- A. 50% of the light is reflected back
 - B. 90% of the light is reflected back
 - C. 100% of the light is reflected back
 - D. 100% of the light is refracted back
- 25.** A converging lens is:
- A. Fatter in the middle than at the edges
 - B. Thinner in the middle than at the edges
 - C. The same thickness in the middle as at the edges
 - D. The same as a diverging lens
- 26.** When looking into a mirror the image appears to be:
- A. In front of the mirror
 - B. At the surface of the mirror
 - C. Nowhere in particular
 - D. Behind the mirror
- 27.** When light is refracted it:
- A. Moves in a circle
 - B. Changes direction
 - C. Reflects back on itself
 - D. Disappears
- 28.** The refractive index of a material is calculated by dividing the speed of light in a vacuum by the:
- A. Speed of sound in a vacuum
 - B. Angle of incidence
 - C. Speed of light in the material
 - D. Speed of light in water
- 29.** If a ray of light strikes a glass block at 45° and the refractive index of glass is 1.6, what will be the angle of refraction:
- A. 45°
 - B. 62.2°
 - C. 36.4°
 - D. 26.2°
- 30.** The image produced by a magnifying glass is:
- A. Upright, magnified, further from the lens than the object, virtual
 - B. Inverted, magnified, further from the lens than the object, virtual
 - C. Inverted, magnified, further from the lens than the object, real
 - D. Upright, magnified, further from the lens than the object, real