

Dulwich International High School Suzhou's IGCSE International Curriculum
Suitability Assessment Information – 2020

苏州德威国际高中 IGCSE 国际课程适应力评估信息 – 2020 年

The IGCSE International curriculum suitability assessment is designed as a comprehensive assessment of students' ability to access our curriculum and succeed in our school. 本次 IGCSE 国际课程适应力评估旨在全面评估学生是否能够成功完成我校学业的能力。

Due to the way the assessment is scheduled, students possibly may not sit the assessment in the order listed in this document. One week before the assessment, each candidate will be informed of the order in which they will sit the assessment. 关于评估的具体安排，相关科目的评估时间可能不按照以下列表的顺序。评估前一周内，每个学生都会收到评估时间的具体安排通知。

The Assessment will comprise 评估由以下部分组成：

- A. English Computer Based Assessment 英语综合运用评估 – 60 minutes
- B. Writing Assessment 英文写作能力评估 – 30 minutes
- C. Mathematics Assessment 数学水平评估 – 60 minutes

Equipment 所需文具及其他说明：

Students will be provided with a pen, pencil and eraser.

我校会提供一切评估所需文具及物品，包括中性笔、铅笔和橡皮。

DHSZ has a zero-tolerance policy of academic dishonesty – Students discovered with unauthorized materials or cheating in any way will be disqualified from the entire assessment and not be permitted to sit a further admissions assessment during that academic year.

苏州德威国际高中严禁作弊，如学生被发现携带未获许可带入评估现场的物品，或有任何形式的作弊，会被取消评估资格，并在该学年内不得参加任何我校评估。

Following the assessment, some students may be invited for further assessment or interviews.

参加评估后，部分学生可能会被邀请到我校做进一步评估或面试。

English Computer Based Assessment (up to 60 minutes)
英语综合运用评估 (60 分钟)

Section A: Use of English (30 mins)

The Use of English section will comprise of approximately 30 questions which test students' ability to distinguish and select the correct verb tenses, sentence structures, and vocabulary. There are two parts to the test. The first section is a multiple choice test in which students will be asked to select the most appropriate answer from a selection of four possibilities, based on contextual clues in a reading excerpt. The second section is an open cloze test, in which students will be given a single, long text with blanks and they will be required to fill in the blanks, based on contextual clues.

A 部分：英文知识运用 (30 分钟)

此部分将包括大约 30 个问题，主要评估学生对语法和词汇的掌握能力。此评估共有两个部分。第一部分是单项选择题，主要基于一份阅读节选，要求学生根据上下文线索，从四个选项上选出最合适的答案。第二部分是一个开放式的完形填空，要求学生在提供的文章中，根据上下文线索及对英语运用的综合掌握能力，填出空白部分。

Section B: The Listening and Comprehension Assessment (30 mins)

The Listening section is a multiple choice test and will comprise of approximately 15 questions which test students' ability to hear and understand the meaning of short listening. Students will have the option to listen to the recordings twice, and then, from the four options, select the answer which best fits their understanding of the listening.

B 部分：听力和阅读理解评估 (30 分钟)

此部分是单项选择题，此部分问题类型比较广泛，将包括大约 15 个问题，主要评估学生听取和理解短文的能力。学生将听两遍录音，然后从四个选项中，选择他们理解的最适合的答案。

Writing Assessment (30 minutes)
英文写作能力评估 (30 分钟)

The assessment will require students to write an essay which explains the opinions, reasons, causes, or effects of a particular issue which exists in the modern world. Although students will not be tested on the content of the essay, it is expected that students will be able to describe their thoughts on the topic and give reasonable and appropriate explanations. Students should write between 150-200 words, and they should make sure that the essay conforms to an essay structure (i.e. have an introduction and conclusion.)

这项评估要求学生写一篇表达个人观点、阐述理由和原因或是针对现代社会中存在的问题所造成的影响进行阐述的文章。此项评估旨在观察学生能否根据主题表达个人观点并给出合理的阐述。文章规定为 150-200 字，学生应确保所写文章和要求的结构相符（即有开头、主体、结尾）。

Mathematics Assessment (60 minutes)
数学能力评估 (60 分钟)

Bilingual paper, 60 minutes in total

Section A consists of short questions designed to assess a broad range of key mathematical ideas, which are designed to thoroughly assess the students understanding of the more demanding aspects required. This will consist of 15 questions, 5 assessing a good understanding of the mathematical techniques, 5 more challenging questions assessing the use of mathematical ideas, and 5 assessing problem solving skills in mathematics.

Section A sample:

$$\begin{aligned}a + b + c &= 0 \\2b + 3c - a &= -9 \\6c - 3b - a &= -23\end{aligned}$$

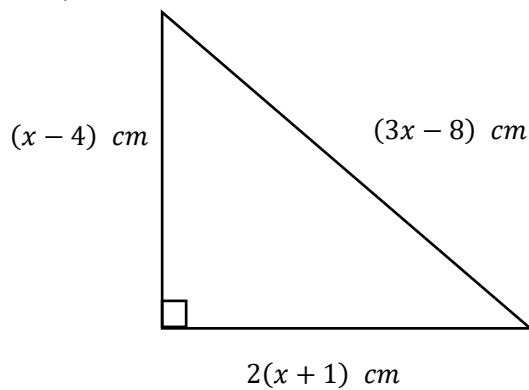
Find the values of a, b and c . Write your answer in the form (a, b, c) .

求出 a, b, c 的值。答案写成 (a, b, c) 的形式。

Section B consists of 1 question which is highly demanding, requiring excellent mathematical fluency, and an ability to apply mathematical concepts in the most difficult of situations. Full working (method) should be shown for this section. Zero marks will be awarded for writing only the answer.

The content of sections A & B in the Maths Assessment will include material generally taught in Chinese junior middle schools.

Section B sample:



Find the area of the above triangle. Show your working.

求出三角形的面积，需要写出解题过程。

数学能力评估为中英文双语对照，包含A、B两部分，共计60分钟

A部分是通过简答题来评估学生目前所学到的关键性的数学知识点，以及全面评估学生对要求更高的知识点的掌握。共有15道问题，5道评估对于数学理论的理解力，5道更具挑战性地评估关于数学思维的运用，5道评估解决数学问题的技巧。

A部分样题：

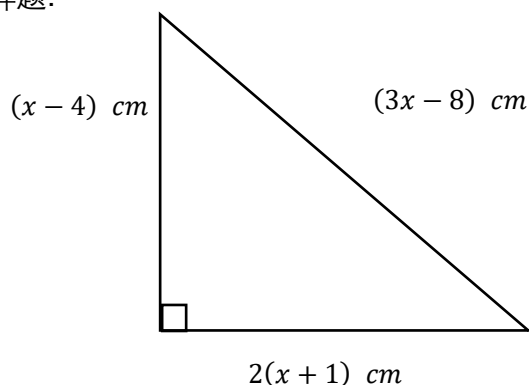
$$\begin{aligned}a + b + c &= 0 \\2b + 3c - a &= -9 \\6c - 3b - a &= -23\end{aligned}$$

Find the values of a, b and c . Write your answer in the form (a, b, c) .

求出 a, b, c 的值。答案写成 (a, b, c) 的形式。

B部分为1道难度较大的解答题，要求学生有出色的数学知识运用能力，以及在高难度的问题中运用数学概念的能力。所有的解题步骤都必须呈现出来，只填写最后的答案将会被零分处理。

B部分样题：



Find the area of the above triangle. Show your working.

求出三角形的面积，需要写出解题过程。

The A and B parts of the Mathematics Assessment mainly examines the knowledge points taught in junior high schools.

数学能力评估中的A和B部分，考查主要知识点如下：

Topics may include:

1. Linear equations 线性方程
2. Quadratic equations and functions 二次方程与函数
3. Linear inequalities 线性不等式
4. Angles in parallel lines and circles 平行线和圆的定理
5. Similar shapes 相似图形

6. Right-angled triangles (sin/cos/tan and Pythagoras theorem) 直角三角形(sin/cos/tan 和毕达哥拉斯定理)
7. Length/Area/Volume calculations 长度/面积/体积计算
8. Probability and statistics 概率和统计